

おてんば恋娘

ZUN - 紅薙旅人

Allegretto ♩ = 140

This piano score is for the piece 'Ottenba Koiyaro' (おてんば恋娘) by ZUN. It is in 6/8 time with a tempo of 140 beats per minute. The key signature has one sharp (F#). The score is divided into six systems, each with a measure number (1, 4, 8, 12, 16, 19) at the beginning of the first staff. The notation includes treble and bass staves with various musical symbols such as notes, rests, and dynamic markings. The dynamics include *p* (piano) at measure 1, *mf* (mezzo-forte) at measure 8, and *f* (forte) at measure 12. There are also markings for *8va* (octave up) at measures 2 and 5. The score features a variety of musical textures, including arpeggiated figures, sustained chords, and melodic lines. The piece concludes with a final chord in the bass staff at measure 20.

おてんば恋娘

23

p

27

32

36

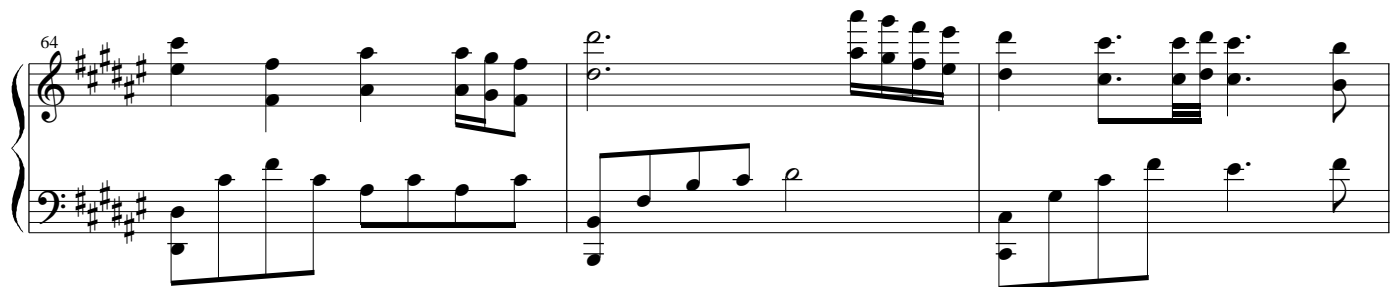
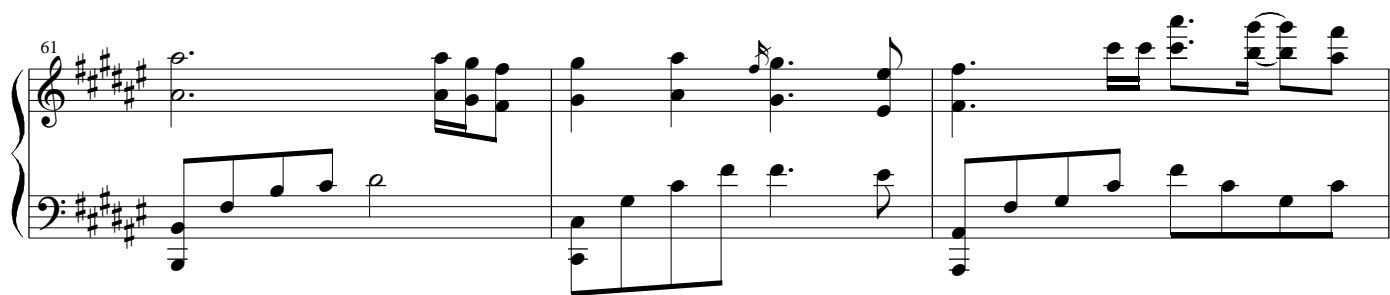
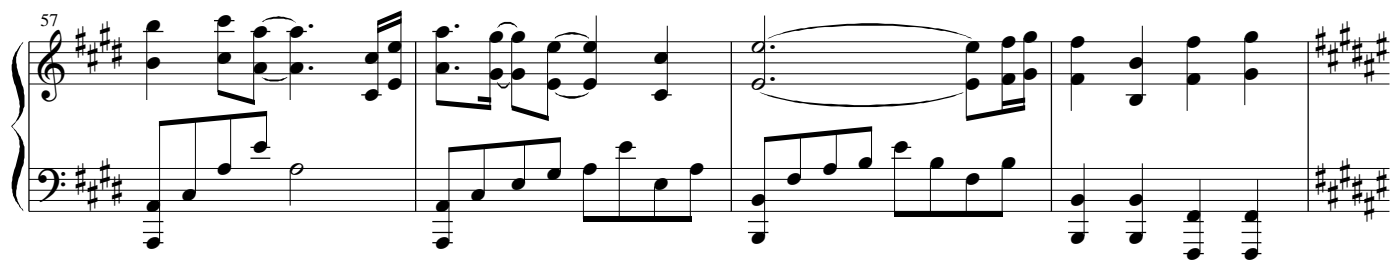
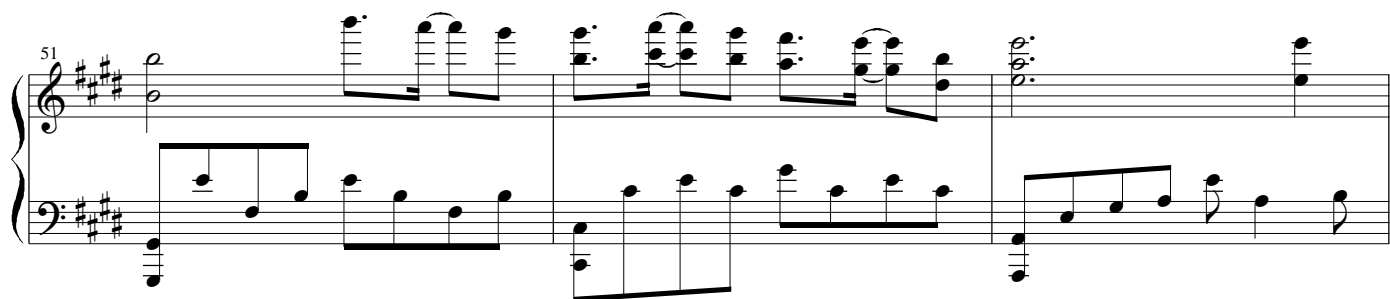
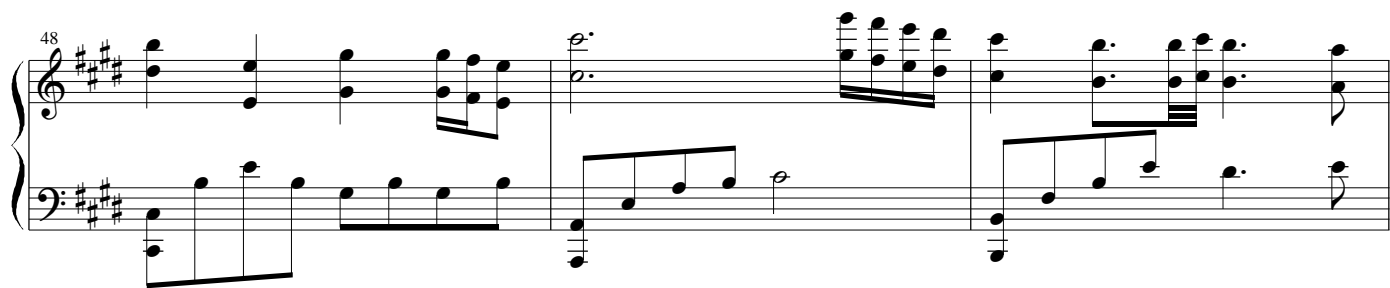
40

gva. cresc.

44

f

おてんば恋娘



おてんば恋娘

67

Musical score for 'The Rose Tree' (Meisterlied). The score is in 3/4 time and G major (one sharp). It features a treble and bass staff. The melody is in the treble staff, and the accompaniment is in the bass staff. The score includes a key signature change from G major to E major (three sharps) at measure 67. The melody consists of eighth and sixteenth notes, often beamed together. The accompaniment features a steady eighth-note pattern in the left hand and a more melodic line in the right hand, often using beamed eighth notes.

A musical score for the song 'The Rose Tree'. The score is written for a grand piano, with a treble and bass staff. The key signature is one sharp (F#), and the time signature is 4/4. The score begins with a treble staff containing a series of chords and a bass staff with a single note. The melody is primarily in the treble staff, featuring a series of chords and a single note. The bass staff provides a simple accompaniment. The score is marked with a '70' in the top left corner.

73

Handwritten musical score for 'The Rose Tree'. The score is written on two staves, Treble and Bass clef. The key signature is one sharp (F#). The melody is in the Treble clef, and the bass line is in the Bass clef. The piece is marked '73' at the beginning. The melody consists of eighth and sixteenth notes, with some rests. The bass line consists of eighth and sixteenth notes, with some rests. The piece ends with a double bar line.

77

mp

Handwritten musical score for 'The Rose Tree'. The score is written on two staves, Treble and Bass clef. The key signature is three sharps (F#, C#, G#). The melody is in the Treble clef, and the bass line is in the Bass clef. The melody starts with a quarter note G#4, followed by a quarter note A4, then a quarter note B4, and a quarter note C5. The bass line starts with a whole note G#2, followed by a whole note A2, then a whole note B2, and a whole note C3. The melody continues with a quarter note B4, a quarter note A4, a quarter note G#4, and a quarter note F#4. The bass line continues with a whole note B2, a whole note A2, a whole note G#2, and a whole note F#2. The melody ends with a quarter note E4, a quarter note D4, a quarter note C4, and a quarter note B3. The bass line ends with a whole note E2, a whole note D2, a whole note C2, and a whole note B1. The score is marked with a mezzo-piano (*mp*) dynamic. The piece is in 4/4 time.

85

Musical score for 'The Rose Tree' (Meisterlied). The score is written for voice and piano. The key signature is D major (two sharps: F# and C#). The time signature is 4/4. The score consists of two systems. The first system contains measures 85 and 86. The second system contains measures 87 and 88. The piano accompaniment features a prominent arpeggiated figure in the right hand, which is repeated in measures 85, 86, 87, and 88. The vocal line enters in measure 85 with the lyrics 'The Rose Tree' and continues through measure 88. The score ends with a double bar line in measure 88.